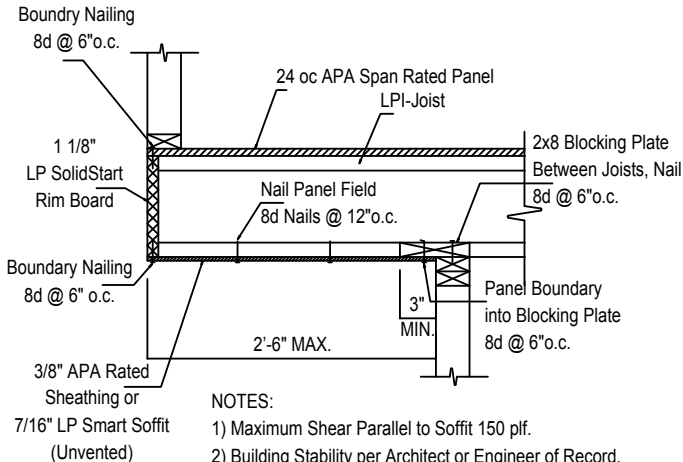


C1b

## CANTILEVER DETAIL (Shear Soffit)



### NOTES:

- 1) Maximum Shear Parallel to Soffit 150 plf.
- 2) Building Stability per Architect or Engineer of Record.
- 3) LPI-Joist to be Designed to Carry Wall Load from above. Reinforcement may be necessary. refer to Installation to Installation Instructions or Appropriate Technical Guide for the Joist Series Required.