



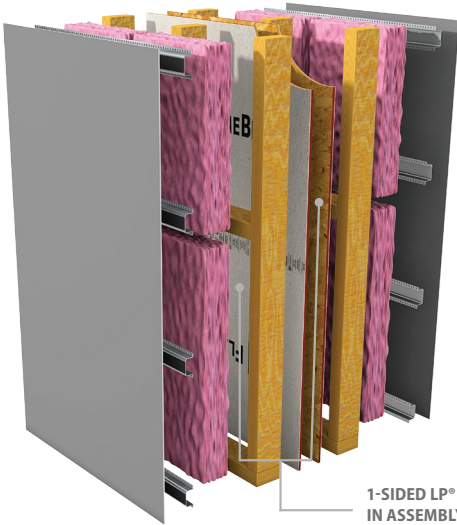
FLAMEBLOCK®
FIRE-RATED OSB SHEATHING

THE SMART ALTERNATIVE TO SHAFT WALL LINER

LP® FLAMEBLOCK® U350 vs SHAFT WALL

Installing traditional Shaft Walls can be cumbersome, time-consuming and costly. When compared to UL U350, it's easy to see why our method is far superior and makes your life easier.

LP FLAMEBLOCK UL DESIGN U350 TYPE B ASSEMBLY



1-SIDED LP® FLAMEBLOCK® IN ASSEMBLY U350, TYPE B (UL DESIGN NO. U350, TYPE B)

30%
LIGHTER ASSEMBLY

★ ★
CUT CLEAN
ALL PANELS

SAVES 4 SQUARE FEET
PER 4 FOOT SECTION OF WALL*

NO ADDITIONAL CONTRACTORS
No specialized parts, tools or contractors are needed to install assembly.

17%
INSTALLATION COST SAVINGS

*ON AVERAGE

30%
HEAVIER ASSEMBLY

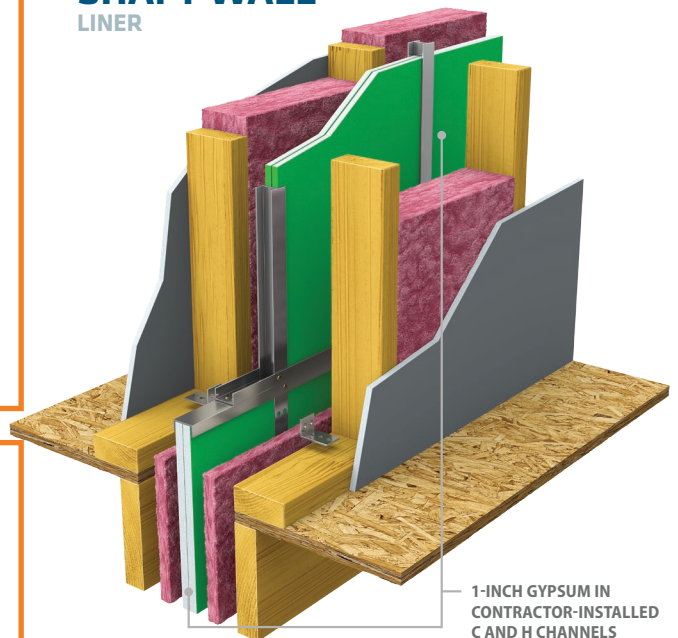
PANELS DO NOT CUT CLEAN

LESS SQUARE FOOTAGE
PER UNIT SPACE

SPECIALTY TRADE
Must install H-studs, C-channels and breakaway clips, and commercial carpentry skills needed to install metal components.

ADDITIONAL LABOR COST REQUIRED

SHAFT WALL LINER



1-INCH GYPSUM IN CONTRACTOR-INSTALLED C AND H CHANNELS

Learn more about the U350 advantage by visiting LPCorp.com/FlameBlock

Cal. Prop 65 Warning: Use of this product may result in exposure to wood dust, known to the State of California to cause cancer. © 2017 Louisiana-Pacific Corporation. All rights reserved. All other trademarks are owned by Louisiana-Pacific Corporation.