

## Design/System/Construction/Assembly Usage Disclaimer

- Authorities Having Jurisdiction should be consulted in all cases as to the particular requirements covering the installation and use of UL Certified products, equipment, system, devices, and materials.
  - Authorities Having Jurisdiction should be consulted before construction.
  - Fire resistance assemblies and products are developed by the design submitter and have been investigated by UL for compliance with applicable requirements. The published information cannot always address every construction nuance encountered in the field.
  - When field issues arise, it is recommended the first contact for assistance be the technical service staff provided by the product manufacturer noted for the design. Users of fire resistance assemblies are advised to consult the general Guide Information for each product category and each group of assemblies. The Guide Information includes specifics concerning alternate materials and alternate methods of construction.
  - Only products which bear UL's Mark are considered Certified.
- 

BXUV - Fire Resistance Ratings - ANSI/UL 263 Certified for United States

BXUV7 - Fire Resistance Ratings - CAN/ULC-S101 Certified for Canada

[See General Information for Fire-resistance Ratings - ANSI/UL 263 Certified for United States Design Criteria and Allowable Variances](#)

[See General Information for Fire Resistance Ratings - CAN/ULC-S101 Certified for Canada Design Criteria and Allowable Variances](#)

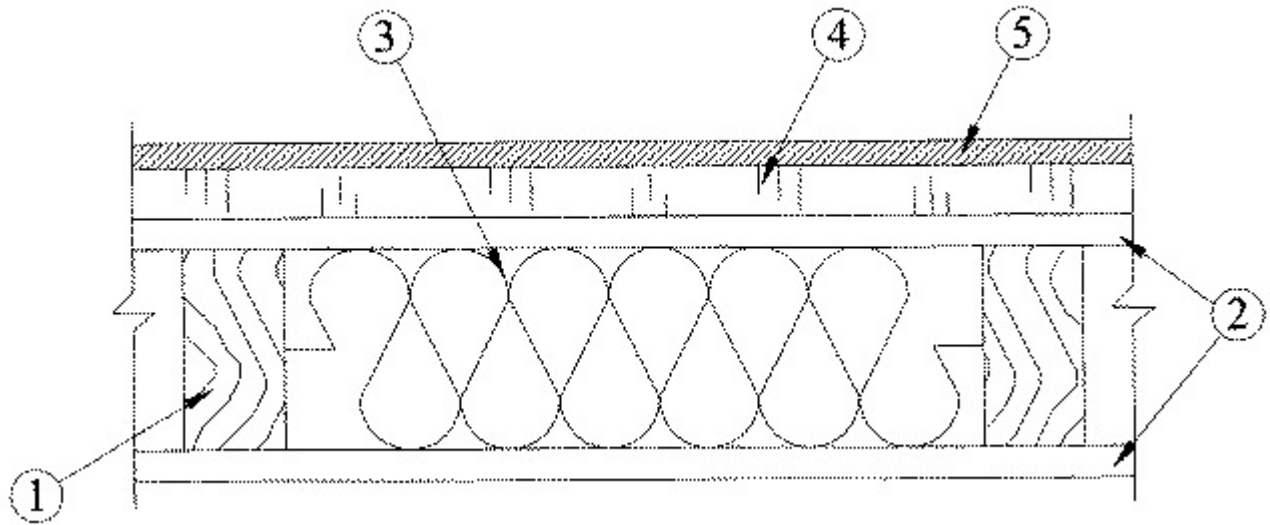
## Design No. **U364**

May 08, 2024

### **Bearing Wall Rating — 1 Hr.**

**This design was evaluated using a load design method other than the Limit States Design Method (e.g., Working Stress Design Method). For jurisdictions employing the Limit States Design Method, such as Canada, a load restriction factor shall be used — See Guide [BXUV](#) or [BXUV7](#)**

**\* Indicates such products shall bear the UL or cUL Certification Mark for jurisdictions employing the UL or cUL Certification (such as Canada), respectively.**



1. **Wood Studs** — Min. nom 2 by 4 in., spaced 16 in. OC.

2. **Gypsum Board\*** — Any 5/8 in. thick UL Classified Gypsum Board that is eligible for use in Design Nos. L501, G512 or U305. Nom 5/8 in. thick (min) 4 ft wide bearing the UL Classification Marking for Fire Resistance applied vertically. Attached to studs with 6d cement coated nails or 1-7/8 in. long No. 6 buglehead dry wall screws spaced 7 in. OC at the edges and in the fields. Vertical joints located over studs. Joints covered with paper tape and joint compound. Fastener heads covered with joint compound.  
**AMERICAN GYPSUM CO** ([View Classification](#)) — CKNX.R14196

**BEIJING NEW BUILDING MATERIALS PUBLIC LTD CO** ([View Classification](#)) — CKNX.R19374

**CABOT MANUFACTURING ULC** ([View Classification](#)) — CKNX.R25370

**CERTAINTED GYPSUM INC** ([View Classification](#)) — CKNX.R3660

**CGC INC** ([View Classification](#)) — CKNX.R19751

**CERTAINTED GYPSUM INC** ([View Classification](#)) — CKNX.R18482

**GEORGIA-PACIFIC GYPSUM L L C** ([View Classification](#)) — CKNX.R2717

**NATIONAL GYPSUM CO** ([View Classification](#)) — CKNX.R3501

**PABCO BUILDING PRODUCTS L L C, DBA PABCO GYPSUM** ([View Classification](#)) — CKNX.R7094

**PANEL REY S A** ([View Classification](#)) — CKNX.R21796

**SIAM GYPSUM INDUSTRY (SARABURI) CO LTD** ([View Classification](#)) — CKNX.R19262

**THAI GYPSUM PRODUCTS PCL** ([View Classification](#)) — CKNX.R27517

**UNITED STATES GYPSUM CO** ([View Classification](#)) — CKNX.R1319

**USG BORAL DRYWALL SFZ LLC** ([View Classification](#)) — CKNX.R38438

**USG MEXICO S A DE C V** ([View Classification](#)) — CKNX.R16089

2A. **Gypsum Board\*** — (As an alternate to Item 2) — Nominal 5/8 in. thick, 4 ft wide panels, secured as described in Item 2.

**PABCO BUILDING PRODUCTS L L C, DBA PABCO GYPSUM** — Type QuietRock ES.

2B. **Wall and Partition Facings and Accessories\*** — (As an alternate to Item 2 and 2A) — Nominal 5/8 in. thick, 4 ft wide panels, secured as described in Item 2.

**PABCO BUILDING PRODUCTS L L C, DBA PABCO GYPSUM** — Type QuietRock 527.

2C. **Gypsum Board\*** — (As an alternate to Item 2) — 5/8 in. thick gypsum panels, with beveled, square, or tapered edges, applied vertically. Gypsum panels fastened to framing with 1-1/4 in. long Type W coarse thread gypsum panel steel screws spaced a max 8 in. OC, with last screw 1 in. from edge of board.

**AMERICAN GYPSUM CO** — Types AGX-1, M-Glass, Type AG-C, LightRoc.

3. **Batts and Blankets\*** — Min. 3-1/2 in. glass fiber or mineral wool batts placed to fill cavity of wall.

See **Batts and Blankets\*** (BZJZ) Category for names of Classified companies.

4. **Foamed Plastic\*** — Max. 2 in. thick rigid polystyrene insulation attached to studs with 2-1/2 in. long galvanized roofing nails.

**OWENS CORNING SCIENCE AND TECHNOLOGY, LLC**

**DUPONT DE NEMOURS, INC.** — Type Styrofoam

4A. **Foamed Plastic\*** — As an alternate to Item 4, maximum 2 in. thick Polyisocyanurate foamed plastic insulation boards Classified in accordance with BRYX and / or CCVW, attached to studs with 3 in. long galvanized roofing nails.

**ATLAS ROOFING CORP** — EnergyShield Pro Wall Insulation, EnergyShield Pro 2 Wall Insulation, EnergyShield CGF Pro, EnergyShield Ply Pro, EnergyShield® CGF, EnergyShield® PanelCast, EnergyShield® and "EnergyShield® XR

**FIRESTONE BUILDING PRODUCTS CO L L C** — "Enverge™ CI Foil Exterior Wall Insulation" and "Enverge™ CI Glass Exterior Wall Insulation"

**HUNTER PANELS, A DIVISION OF CARLISLE CONSTRUCTION MATERIALS, LLC** — Type "Xci-Class A", "Xci 286", "Xci Foil (Class A)", "Xci CG" and "Xci Foil", "Xci CG NH", "Xci Foil NH"

**RMAX, A BUSINESS UNIT OF SIKA CORPORATION** — Types "TSX-8500", "ECOMAXci FR", "TSX-8510", "ECOMAX xi FR White", "ECOMAXci", "ECOMAXci FR Air Barrier", "Thermasheath-XP", "Thermasheath", "Durasheath"

**JOHNS MANVILLE** — Type "AP Foil-Faced Foam Sheathing"

4B. **Building Units\*** — As an alternate to Items 4 or 4A, max. 2-in thick polyisocyanurate composite foamed plastic insulation boards, nom. 48 by 48 or 96 in., with a facer on one side and with oriented strand board or plywood on the other, attached to studs with 3- in. long galvanized roofing nails.

**ATLAS ROOFING CORP** — EnergyShield® Ply

**HUNTER PANELS, A DIVISION OF CARLISLE CONSTRUCTION MATERIALS, LLC** — Type "Xci NB" and "Xci Ply"

**LAMINATORS INC** — Type "Omega ci"

4C. **Building Units\*** — As an alternate to Items 4, 4A or 4B, max. 2-in thick polyisocyanurate composite foamed plastic insulation boards, nom. 48 by 48 or 96 in., with a facer on one or both sides and bonded to fiberboard, oriented strand board or plywood on one side, attached to studs with min. 8d nails or min. 2-1/2 in. long Type W screws.

**RMAX, A BUSINESS UNIT OF SIKA CORPORATION** — Types Thermasheath-SI, ECOBASE ci, ThermaBase-CI, ECOMAXci FR Ply, "ECOMAXci Ply"

4D. **Building Units\*** — As an alternate to Items 4, 4A - 4C, consisting of 7/16-in. thick PS-2 rated oriented strand board (OSB) as cover board bonded to rigid 1/2 in. to 2 in. thick polyisocyanurate insulation, installed vertically with vertical joints located over studs.

Fastened to studs with min. 10d galvanized nails, spaced 6 in. OC at edges and 12 in. OC in the field. Length of nails to be such that they engage with studs minimum 1-3/8 in.

**HUBER ENGINEERED WOODS L L C** — ZIP System ® R Sheathing

4E. **Building Units\*** - As an alternate to items 4, 4A – 4D – Nominal 7/16 in. thick, performance category PS-2 compliant OSB bonded on one side to rigid 1/2 in. to 1-1/2 in. thick extruded polystyrene insulation, installed vertically or horizontally with joints aligned over studs or blocking. Fasten with min. 0.131 in diameter framing nails, spaced a maximum of 6 in OC at edges and 12 in OC in the field. Length of nails shall extend 1-1/2 in into the framing. Panel may be installed with foam against or foam away from framing.

**LOUISIANA -PACIFIC CORP** - Type LP NovaCore® Thermal Insulated Sheathing

5. **Exterior Facings** — Installed in accordance with the manufacturer's installation instructions. One of the following exterior facings is to be applied over the Foamed Plastic\* or Building Units\*:

A. **Vinyl Siding Molded Plastic\*** — Contoured rigid vinyl siding having a flame spread value of 20 or less.

See Molded Plastic (BTAT) category in the Building Materials Directory for names of manufacturers.

B. **Particle Board Siding** — Hardboard exterior sidings including patterned panel or lap siding.

C. **Wood Structural Panel or Lap Siding** — APA Rated Siding, Exterior, plywood, OSB or composite panels with veneer faces and structural wood core, per PS 1 or APA Standard PRP-108, including textured, rough sawn, medium density overlay, brushed, grooved and lap siding.

D. **Cementitious Stucco** — Portland cement or synthetic stucco systems with self-furring metal lath or adhesive base coat. Thickness from 3/8 to 3/4 in., depending on system.

E. **Brick** — Brick veneer, meeting the requirements of local code agencies. Brick veneer attached to the studs with corrugated metal wall ties attached to each stud with 8d cement coated nails, every sixth course of bricks. When brick veneer is used, the gypsum board (item 2) on the exterior side may be eliminated.

**\* Indicates such products shall bear the UL or cUL Certification Mark for jurisdictions employing the UL or cUL Certification (such as Canada), respectively.**

Last Updated on 2024-05-08

---

The appearance of a company's name or product in this database does not in itself assure that products so identified have been manufactured under UL Solutions' Follow - Up Service. Only those products bearing the UL Mark should be considered to be Certified and covered under UL Solutions' Follow - Up Service. Always look for the Mark on the product.

UL Solutions permits the reproduction of the material contained in Product iQ subject to the following conditions: 1. The Guide Information, Assemblies, Constructions, Designs, Systems, and/or Certifications (files) must be presented in their entirety and in a non-misleading manner, without any manipulation of the data (or drawings). 2. The statement "Reprinted from Product iQ with permission from UL Solutions" must appear adjacent to the extracted material. In addition, the reprinted material must include a copyright notice in the following format: "©2024 UL LLC."