



Online Directories

[Quick Guide](#) [OD Home](#) [Contact Us](#) [ULC.ca](#)

BXUVC.W325 **Fire Resistance Ratings**

[Page Bottom](#)

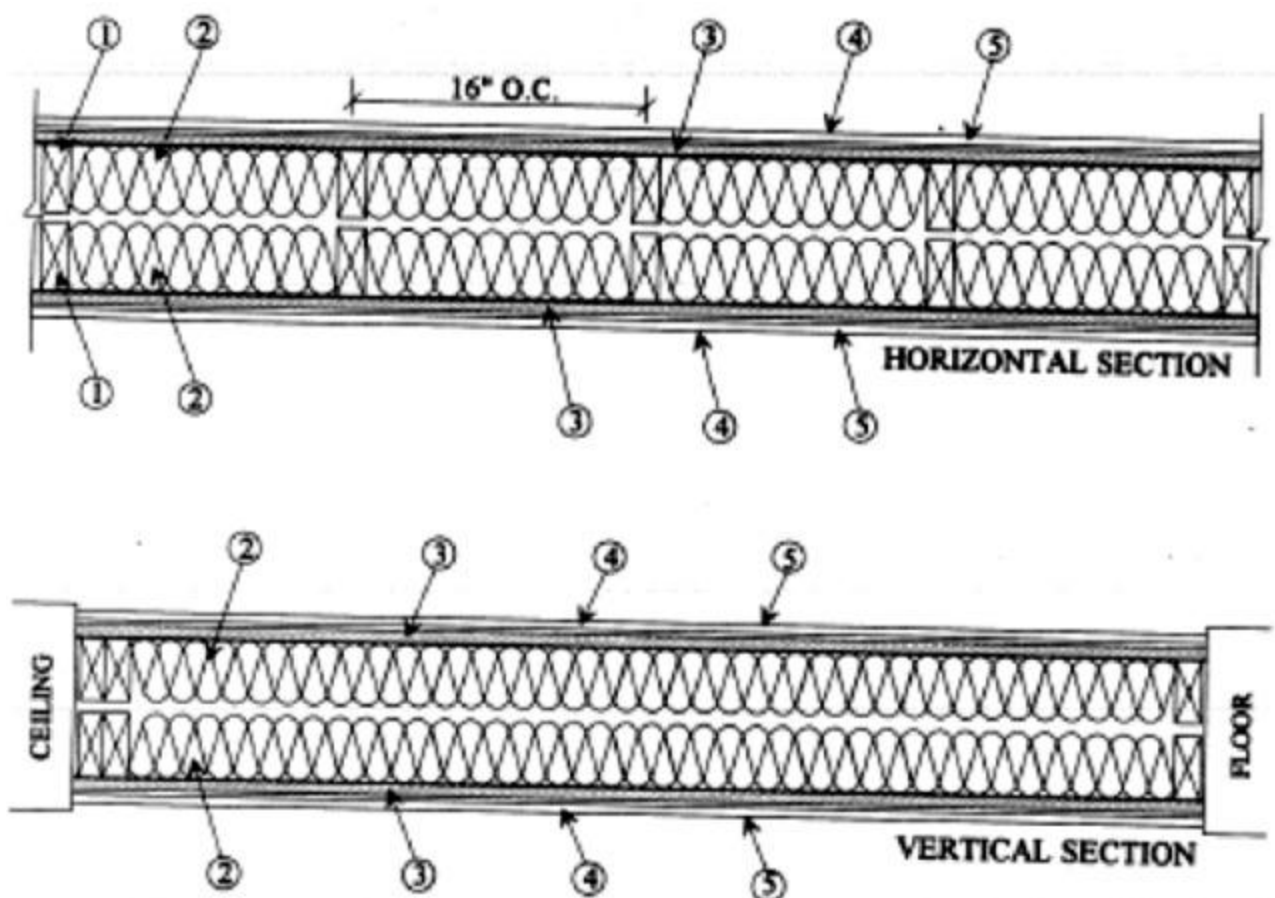
Fire Resistance Ratings

[See General Information for Fire Resistance Ratings](#)

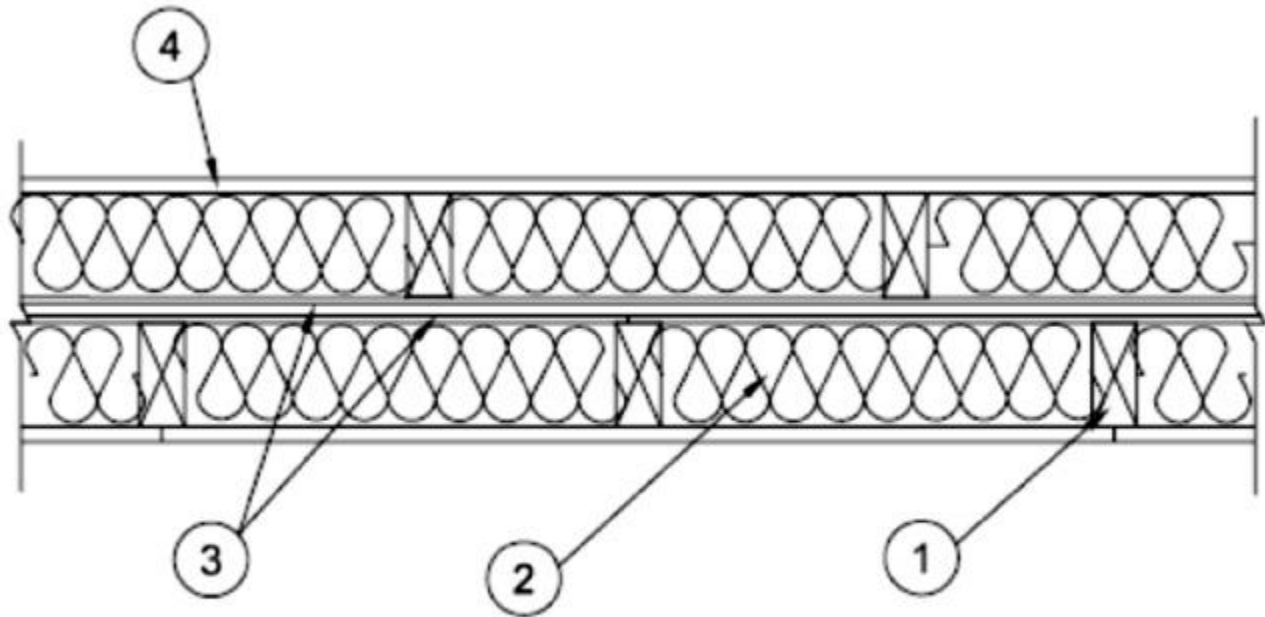
Design No. W325
November 10, 2010

Assembly Rating — 2 hr

**Load Restricted — Assembly evaluated in accordance with Working Stress Design methods,
for use under Limit States Design methods; refer to information under Guide [BXUVC](#).**



CONFIGURATION A



CONFIGURATION B

Bearing Wall - (Finish Rating - 23 min)

1. **Wood Studs** — 38 mm by 89 mm, spaced 400 mm OC in with two 38 mm by 89 mm top and one 38 mm by 89 mm bottom plates. Studs cross-braced at mid-height and effectively fire stopped.

2. **Batts and Blankets** — ULC labeled, unfaced mineral fiber insulation, 89 mm in. thick, nom 48 kg/m³, pressure fit in the wall cavity between stud, plates, and cross bracing.

• 3. **Building Units** — (BZXXC) For Configuration A; building units placed as the base layer with the laminate face against, and nailed to the wood framing with 48 mm long, 6d nails, spaced 150 mm OC on the perimeter and 300 mm OC in the field. For Configuration B; building units placed in two layers back to back between the studs with the laminate face against, and nailed to the framing with 48 mm long 6d nails, spaced 150 mm OC on the perimeter and 300 mm OC in the field.

BARRIER TECHNOLOGY CORP — Type Blazeguard 1-Side

LOUISIANA-PACIFIC CORP — Type LP FlameBlock 1-Side

4. **Gypsum Board** — ULC labeled, wallboard is 15.9 mm thick, 1220 mm wide.

For Configuration A; wallboard shall be applied vertically over building units (Item 3) with joints staggered from joints of building units and nailed to studs and bearing plates through the building units 200 mm OC. with 8d cement coated nails, 60 mm long, 2.87 mm shank diam. and 7.14 mm diam. head.

For Configuration B; wallboard shall be applied vertically and attached directly to the wood studs with 48 mm long, 8d cement coated nails spaced 200 mm OC.

5. **Joints and Nailheads** — Wallboard joints covered with tape and joint compound. Nail heads covered with joint compound.

[Last Updated](#) on 2010-11-10

[Questions?](#)

[Print this page](#)

[Notice of Disclaimer](#)

[Page Top](#)

[Copyright © 2011 Underwriters Laboratories of Canada Inc.](#)

The appearance of a company's name or product in this database does not in itself assure that products so identified have been manufactured under ULC's Follow-Up Service. Only those products bearing the ULC Mark should be considered to be Listed and covered under ULC's Follow-Up Service. Always look for the Mark on the product.

ULC permits the reproduction of the material contained in the ULC Online Directories subject to the following conditions: 1. The Guide Information, Designs and/or Listings (files) must be presented in their entirety and in a non-misleading manner, without any manipulation of the data (or drawings). 2. The statement "Reprinted from the ULC Online Directories with permission from Underwriters Laboratories of Canada Inc." must appear adjacent to the extracted material. In addition, the reprinted material must include a copyright notice in the following format: "Copyright © 2011 Underwriters Laboratories of Canada Inc."

An independent organization working for a safer world with integrity, precision and knowledge.

