

Installation Instructions

General:

- LP NovaCore™ Thermal Insulated Sheathing has been evaluated as an alternate to wood structural panels (WSP) for the intermittent braced wall provisions of Section R602.10.4 of the International Residential Code (IRC).
- LP NovaCore™ panels must only be installed on walls. Install the panels in accordance with the requirements of Section R602.10.4 of the IRC, as modified by these instructions.
- The use of LP NovaCore™ panels for braced walls is limited to Seismic Design Categories A, B and C (excluding townhouses in C) and in regions where wind design is not required by Section R301.2.1.1 of the IRC.
- All mechanical strapping or connectors (e.g., to resist uplift and lateral loads) must be installed directly to the wall framing before installing the LP NovaCore™ panels.
- An approved thermal barrier, such as minimum 1/2" gypsum wallboard, must be installed on the interior side of the wall framing, opposite the LP NovaCore™ panels, in accordance with Section R316.4 of the IRC.
- **Do NOT allow foam insulation in contact with flame or heat sources over 165° F.**
- LP NovaCore™ panels must be covered by an approved water-resistive barrier.
- Use of an interior vapor retarder with LP NovaCore™ panels shall be in accordance with the continuous foam insulation provisions of Section 702.7 of the IRC, or local code.
- LP NovaCore™ panels can be cut with standard woodworking tools. Cut the panels from the OSB side.
- Exercise safe practices at all times while handling and using this product. Refer to the relevant Safety Data Sheet (SDS) for important information on the safe handling and use of this product. These can be found at www.lpcorp.com.

Wall Installation:

- LP NovaCore™ panels must be installed with the foam direct to the studs (i.e., the OSB facing the outside).
- The panels may be installed vertically or horizontally. In horizontal installations, stagger joints a minimum of one stud space.
- **All panel edges must be backed by framing or 2x blocking** except that horizontal edges may be left unblocked when not used as a bracing panel.
- Provide 1/8" minimum space between panel ends and edges. Use a spacer tool (i.e., 10d box nail) to assure accurate and consistent spacing.
- Fasten panels to the framing and blocking:
 - Use minimum 3" long x 0.131" diameter, full round head, framing nails.
 - Nails must be spaced no more than 4" oc along supported panel ends and edges, and 12" oc at intermediate supports.
 - Place nails 3/8" from all panel edges.

- Nail heads must be flush to the OSB.
- **DO NOT** over-drive the nails. Reduce pressure to the gun if needed to avoid breaking the corners of the OSB. In case of a broken corner, add a nail 1" away from the break along both adjoining edges of the panel.
- Framing at corners:

CAUTION: LP NovaCore™ panels are nominally 1-7/16" thick. Additional framing may be needed at corners to account for the thickness of the panels. Wall stud spacing may also need to be adjusted to meet the WSP braced wall length requirements in Table R602.10.5 of the IRC (minimum 48" for walls up to 10' tall).

- Outside corners (see Figure 1): Install the 1st panel to within an 1/8" of the edge of the corner end stud. Install the 2nd panel to overlap so that the edge of the 2nd panel is flush with the outer face of the OSB from the 1st panel. Alternatively, the foam of the 2nd panel may be trimmed, and the 1st panel shifted to cover the foam of the 2nd panel (leave an 1/8" gap).

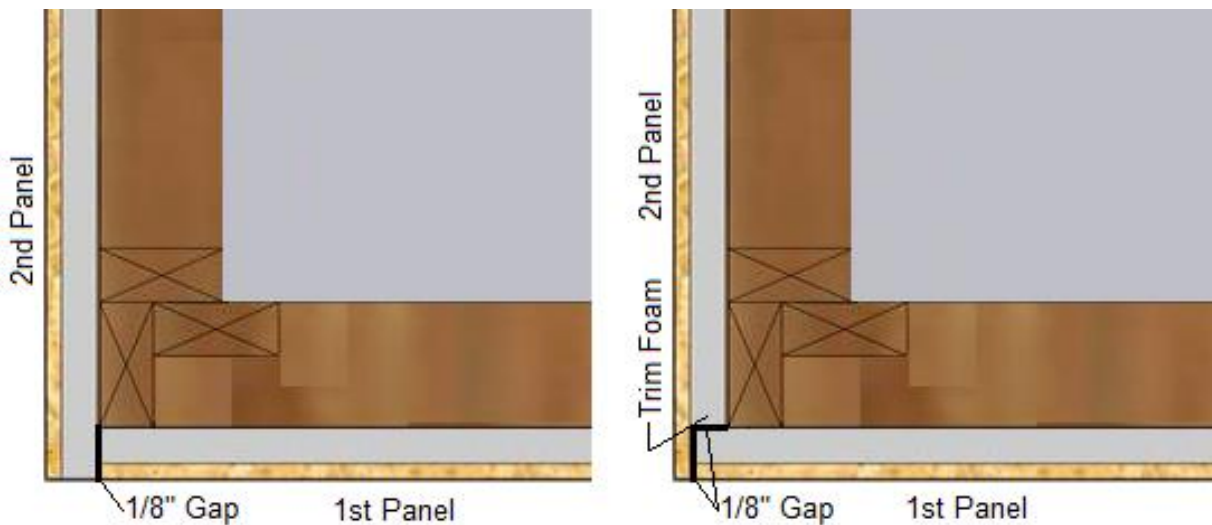


Figure 1: Installing LP NovaCore™ panels at outside corners.

- Inside corners (see Figure 2): Install the 1st panel into the flat stud of the connecting wall (leave an 1/8" gap). Install the 2nd panel from the other side to leave an 1/8" gap with the 1st panel. Two options are shown. The details shown assume 2x4 wall framing. Adjust as needed for 2x6 wall framing.

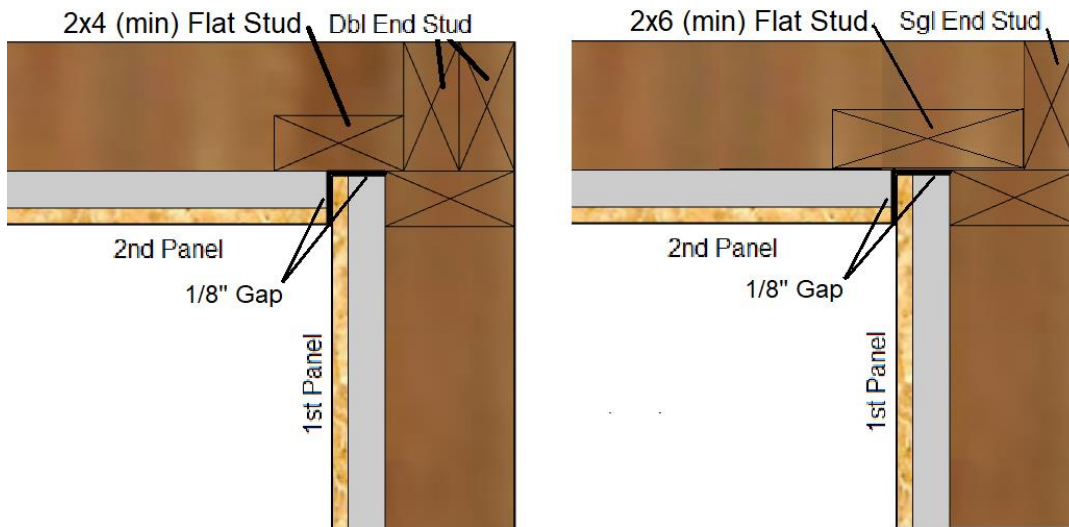


Figure 2: Installing LP NovaCore™ panels at inside corners.

Storage & Handling:

- Store LP NovaCore™ panels indoors or protected from extended UV exposure of the foam or water exposure of the sheathing prior to installation.
- Keep panels off the ground, well-supported, on a flat surface.
- Use a minimum of 3 stickers spaced evenly under each unit. Stickers shall be a minimum 2-1/2" wide (i.e., a flat 2x3).
- Ensure stickers are aligned vertically when stacking units.
- **DO NOT** stack higher than 3 units. Space unit stacks a minimum of 6" on all sides.
- LP NovaCore™ panels are packaged with a weather-resistant unit cover to provide protection on the jobsite prior to installation. Replace cover over unused portion of panels. Keep panels clean and dry. Inspect prior to application.
- Be careful not to drop on corners or crush the edges of the foam insulation.

⚠ WARNING Drilling, sawing, sanding or machining wood products can expose you to wood dust, a substance known to the State of California to cause cancer. Avoid inhaling wood dust or use a dust mask or other safeguards for personal protection. For more information go to www.P65Warnings.ca.gov/wood.

© 2022 Louisiana-Pacific Corporation. All rights reserved. LP NovaCore is a trademark of Louisiana-Pacific Corporation.

Version dated 3/23/2022