

Non-Standard Application (NSA) Bulletin No. 5005

LP® SmartSide® installed on Sloped Columns

Different limited warranty terms and exclusions apply when using the Non-Standard Applications option described in this Bulletin. Refer to the [LP® SmartSide® and LP® SmartSide® ExpertFinish® Prorated 10-year Limited Warranty and Arbitration Agreement - Accessories and Non-Standard Applications](#).

LP® SmartSide® and LP® SmartSide® ExpertFinish® Lap, Panel, Vertical Siding, Trim or Soffit may be used as column cladding in a sloped application. **The slope of the column cladding must not exceed ten (10) degrees from vertical.** All other aspects of the installation shall be consistent with the LP SmartSide Application Instructions or the LP SmartSide ExpertFinish Accessory Products Application Instructions.

Sloped Column Applications:

- If framing around an existing column, be sure to use pressure treated lumber in all locations that may touch concrete and masonry. Provide adequate framing support for the siding or trim products to be properly fastened. (Diagram 1)
- Be sure to use proper flashing with a minimum 4 inch (102 mm) upper leg. If flashing does not meet upper leg requirement, flashing tape may be used with flashing to create 4" (102 mm) upper leg. A water-resistant barrier (WRB) is recommend. (Diagram 2)
 - See [Diagrams 3 & 4](#) for alternate trim flashing options at column base.
- Siding applied adjacent to surfaces such as porches, patios, balconies, walking surfaces or porch columns must have a clearance of at least 1 inch (25 mm) above any horizontal surface. Clearance may be reduced to 3/8 inch (10 mm) for:
 - Porches, patios, balconies, or walking surfaces that provide gaps between decking boards that allows water to flow through so water cannot accumulate and are covered by a roof, not an eave or overhang; or

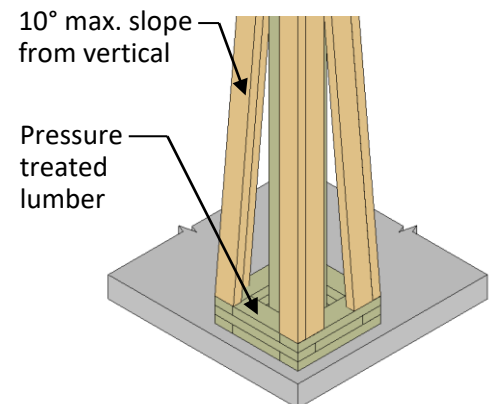


Diagram 1

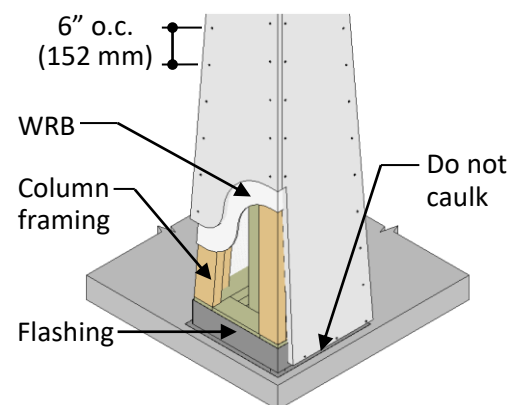


Diagram 2

- Porch columns with walking surfaces that slope away from the structure or the surface provides gaps that allow water to flow through so that it cannot accumulate.
- Fasten all products greater than 11 inches (279 mm) wide a maximum of every 6 inches (152 mm) o.c. around the perimeter and every 12 inches (305 mm) o.c. along intermediate supports. (Diagram 2)
- Fasten products 11 inches or less (279 mm) wide a maximum of every 6 inches (152 mm) o.c. around the perimeter, no intermediate fasteners required. (Diagram 2)
- All wood substrate that is exposed to the weather must be sealed in a manner that prevents moisture intrusion and water build up.
- Products **MUST NOT** be in direct contact with masonry, concrete, brick, stone, stucco or mortar. (Diagram 5)
- See LP SmartSide Trim & Fascia Application Instructions for additional column details.
 - Refer to Application Instructions for all other aspects of trim and siding installation.
- **For warranty coverage information refer to the LP® SmartSide® and LP® SmartSide® ExpertFinish® Prorated 10-Year Limited Warranty and Arbitration Agreement - Accessories and Non-Standard Application.**

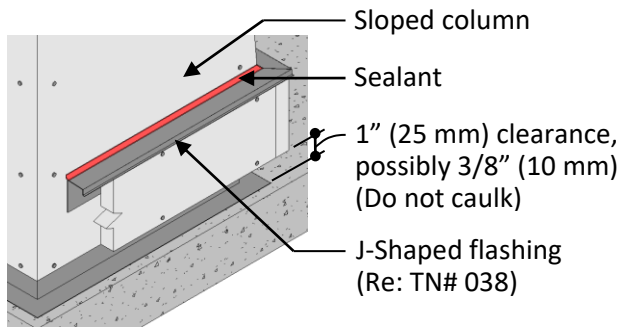


Diagram 3

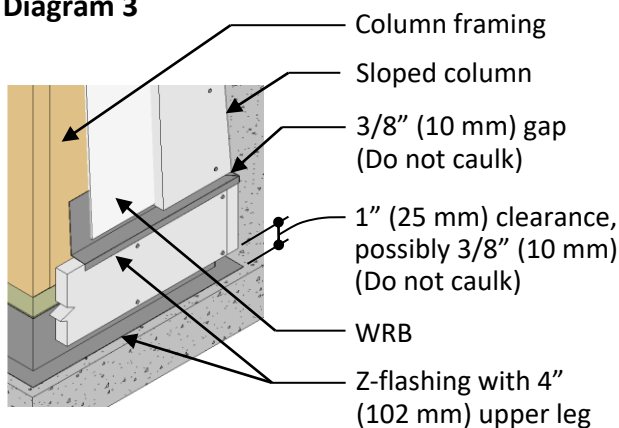


Diagram 4

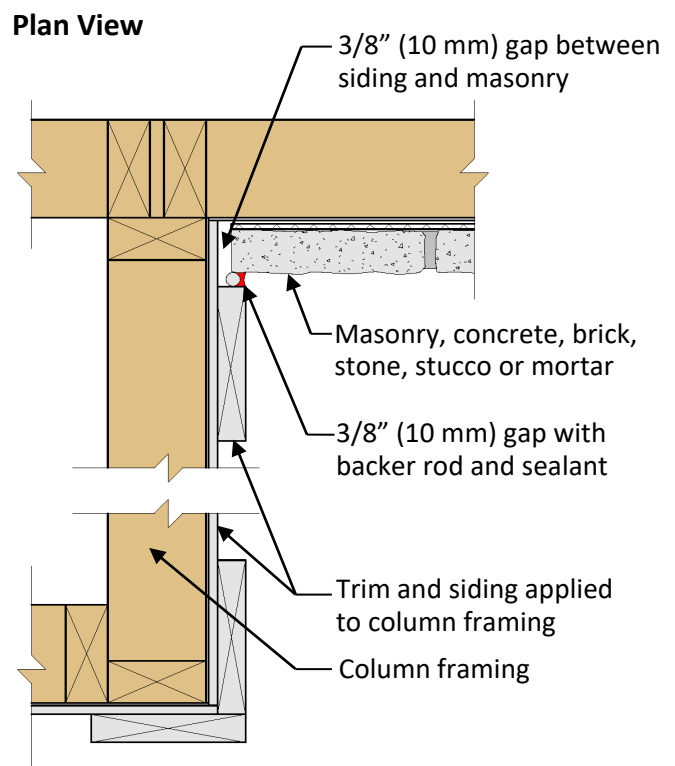


Diagram 5