

# Technical Bulletin No. CX-003

## LP® CanExel® Touch-Ups

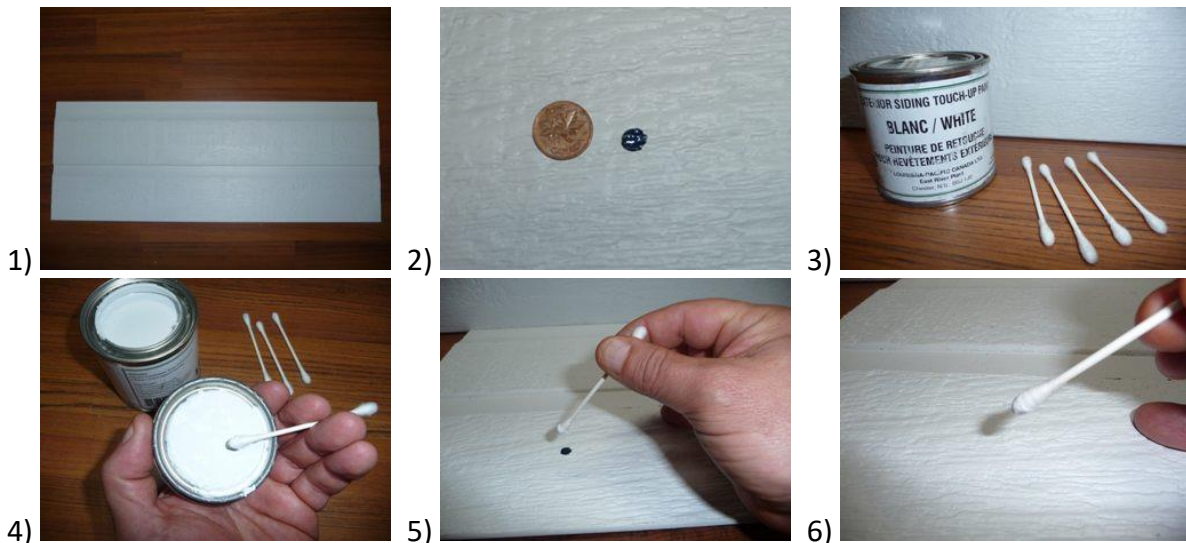
LP CanExel siding should be inspected when installation is completed. Check for nicks and chips from manipulation. A quick verification will identify minor spots to touch-up and is a proper way to ensure the siding was installed professionally, without noticeable faults.

If touch-ups are required, we suggest you follow the very easy method detailed in the photos below for quick correction (dip in paint lightly, dab, blot onto spots, and repeat).

It is recommended that the touch up paint be applied with a cotton swab. Apply the paint to the affected areas on the boards and let it dry for approximately 1 hour.

### Do not apply with a paint brush

For best results, the exterior temperature should be at least 50°F/10°C (24 hour period)



**TOUCH-UP PAINT** is provided for use on small nicks and chips in factory finish, do not apply over any part of non-damaged surface of factory finish. Differences in finish colour due to the misapplication of touch-up paint will not always appear immediately and could become visible after exposure to sunlight.

- LP CanExel is not liable for any colour, sheen, or tone variation due to the misapplication of touch-up paint
- LP CanExel is not liable for any chalking of finish