

## LP® SmartSide® and LP® SmartSide® ExpertFinish® 38 Series Vertical Siding for Board & Batten Applications

This Technical Note provides guidance for the application of LP® SmartSide® 38 Series Vertical Siding for Board & Batten Applications. Additional application information may be found in LP® SmartSide® Panel Siding Application Instructions and LP® SmartSide® Trim and Fascia Application Instructions.

**LP SmartSide 38 Series Vertical Siding must be installed in Board & Batten application, according to the following requirements.**

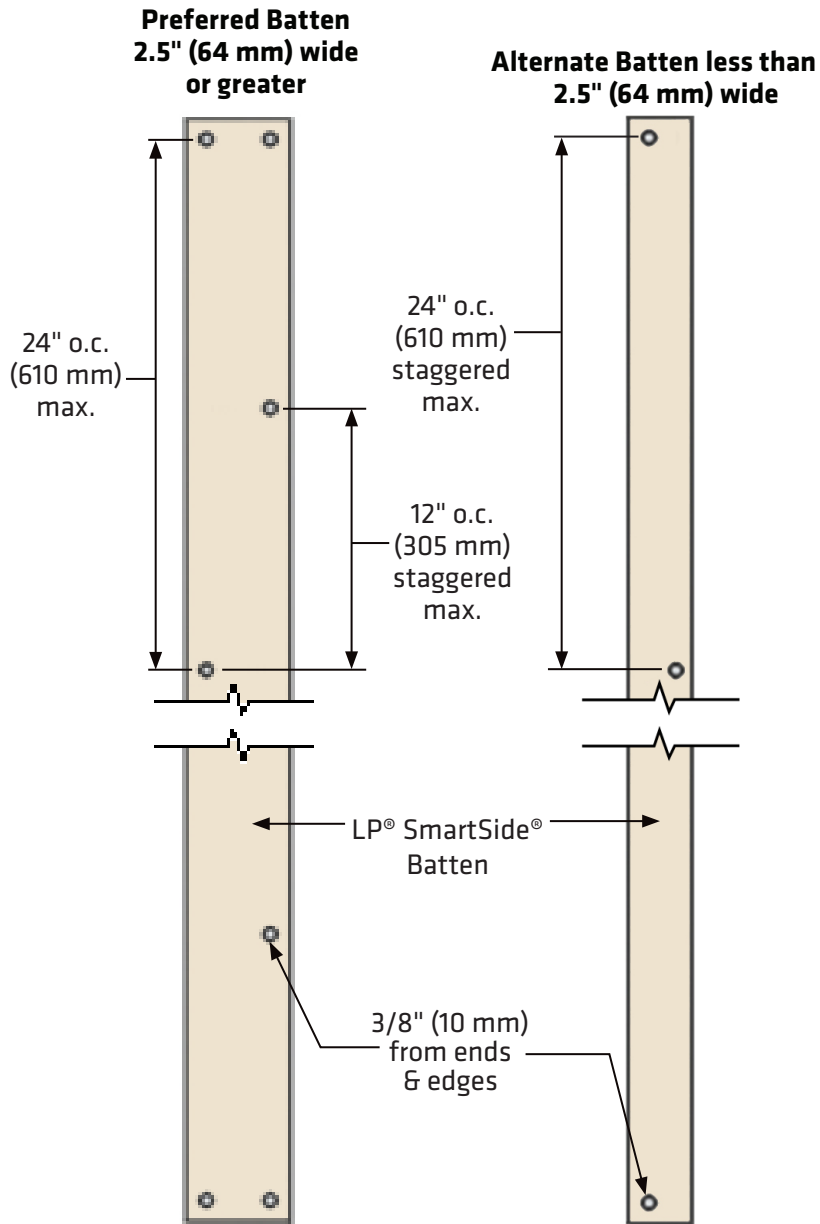
- Siding must be installed over a min. 7/16 Category wood structural panel (WSP) sheathing with an APA Trademark that contains the consensus Standard DOC PS 1 or PS 2. *[In Canada in accordance with CSA 0325]*
  - Exception: LP® FlameBlock® Fire-Rated OSB Sheathing or LP® WeatherLogic®
- **DO NOT bridge floors with Vertical Siding or battens.** Vertical Siding and batten should not span beyond one floor to ceiling distance, or one floor to top of gable distance due to expected plate shrinkage. **Exception:** re-siding existing structures. *(See Figures 5a & 5b)*
  - Provide a min. 3/8" (10 mm) space between floors.
  - Horizontal joint must be flashed with sloped metal Z-flashing
- **DO NOT** install horizontally.
- **A properly installed WRB is required behind siding. Consult your local building code for details.**
- All wood substrate directly exposed to the weather must be sealed to prevent moisture intrusion and water build up:
  - Seal ALL exposed cuts of siding. Field spray applied coatings on cuts are not recommended
  - Sealing can be accomplished by applying a paint or sealant according to the manufacturer's requirements.
- Battens may be a min. 0.5 x 1.5 inches (13 x 38 mm) wide [actual size].
  - Caution: When selecting a batten less than 2.5 inches (64 mm) wide [actual size] it may be difficult for batten to conceal nail heads on vertical siding.
    - Visible nail heads that are not covered by battens are an aesthetic issue and not covered by the LP SmartSide Limited Warranty.
    - Painting all exposed nail heads is recommended.
- Siding must be spaced a min. of 3/16 inch (5 mm). *(See Figure 4a & 4b)*
- All other requirements of the LP® SmartSide® Panel Siding Application Instructions and LP® SmartSide® Trim and Fascia Application Instructions must be followed.
- When using SmartSide siding with other siding products like stucco, brick or cultured stone veneers it is important to use a capillary break so moisture absorbed into those veneers cannot be transferred into siding. Separate SmartSide siding from veneers with min. 3/8 inch (10 mm) space for horizontal or vertical joints, use sealant. Backer rod may be required by the sealant manufacturer. *(See Figure 6)*

### Vertical Siding Guidelines:

- Min. Fastener Type:
  - Corrosion Resistant = hot-dip galvanized (ASTM A153) or equivalent
  - **Ring Shank**
  - Shank diameter = 0.092 inch
  - Length = fastener shall be long enough to fully penetrate WSP sheathing by at least 1/4 inch (6 mm). Ensure that the ring shanks of the nail fully penetrate the sheathing.
    - Caution: Choose a fastener length that will not damage wiring or other utilities in the exterior wall assembly
- Fastener Placement:
  - Max. 3/8 inch (10 mm) from ends and edges (*See Figure 3c*)
- Fastener Spacing:
  - Fasten every 6 inches (152 mm) o.c. along the perimeter (*See Figure 3c*)
    - A wider perimeter nailing pattern may be used depending on the wind pressure, wind speed and wind exposure category limitations outlined in Table 1 in [PR-N124](#) or [ESR-1301](#).

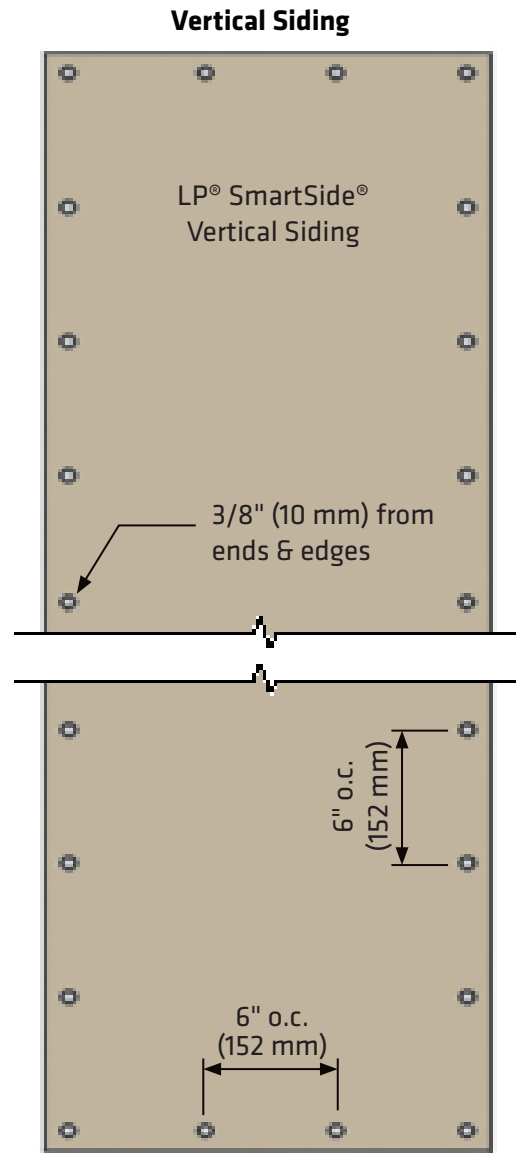
### Batten Guidelines:

- Min. Fastener Type:
  - Corrosion Resistant = hot-dip galvanized (ASTM A153) or equivalent
  - **Ring Shank**
    - Ring Shank nails provide superior resistance to fastener pull-through. In Hurricane-Prone Regions or locations where negative wind loads are a concern, ring shank nails should be used.
    - Trim nails may be used in other locations with the following cautions: Do not overdrive or counter sink the fastener, nail flush with the surface of batten. Batten nails shall be installed per the length, placement, spacing and quantity requirements listed in this document. Detachment of batten is not covered by the LP SmartSide limited warranty whether ring shank or trim nails are used.
  - Shank diameter = 0.092 inch
  - Length = fastener shall be long enough to fully penetrate Vertical Siding by at least 1/4 inch (6 mm) (*See Figure 4a & 4b*)
    - Caution: Choose a fastener length that will not damage wiring or other utilities in the exterior wall assembly
- Fastener Placement:
  - Max. 3/8 inch (10 mm) from ends and edges (*See Figure 3a or 3b*)
- Fastener Spacing:
  - Fastened with two nails at both ends, with additional fasteners spaced a max. of 12 inches (305 mm) o.c. along alternating edges the length of the batten (*See Figure 3a*)
    - Exception: For battens less than 2.5 inches (64 mm) wide, 1 nail is required at each end, with additional fasteners spaced a max. of 24 inches (305 mm) o.c. along alternating edges (*See Figure 3b*)



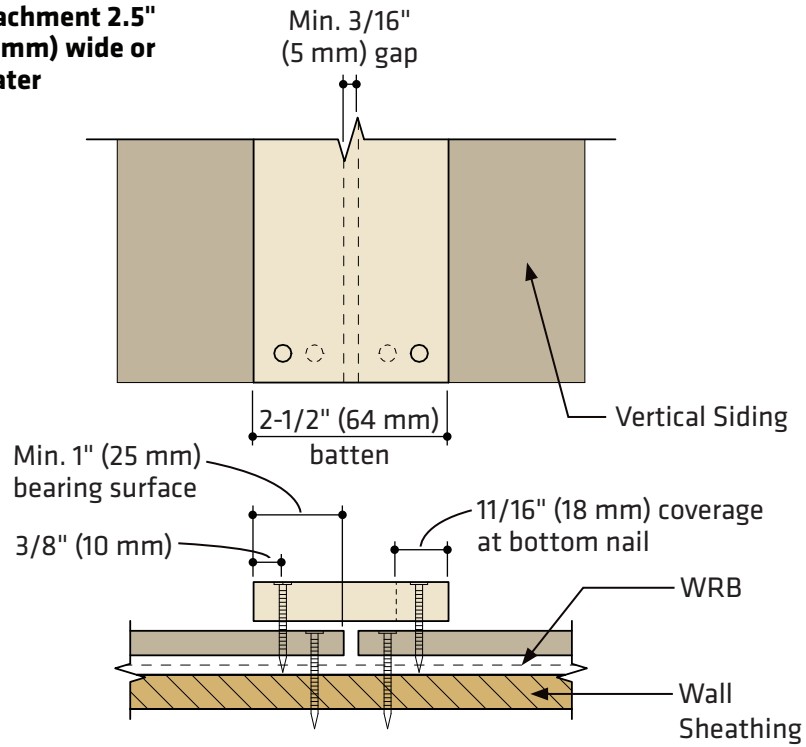
**Figure 3a**

**Figure 3b**



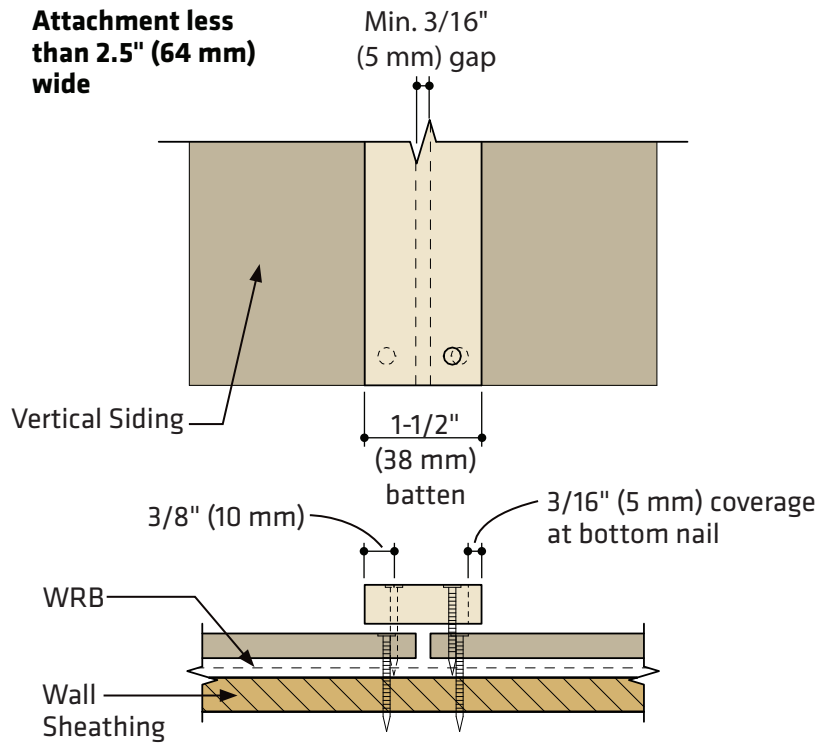
**Figure 3c**

**Preferred Batten Attachment 2.5" (64 mm) wide or greater**



**Figure 4a**

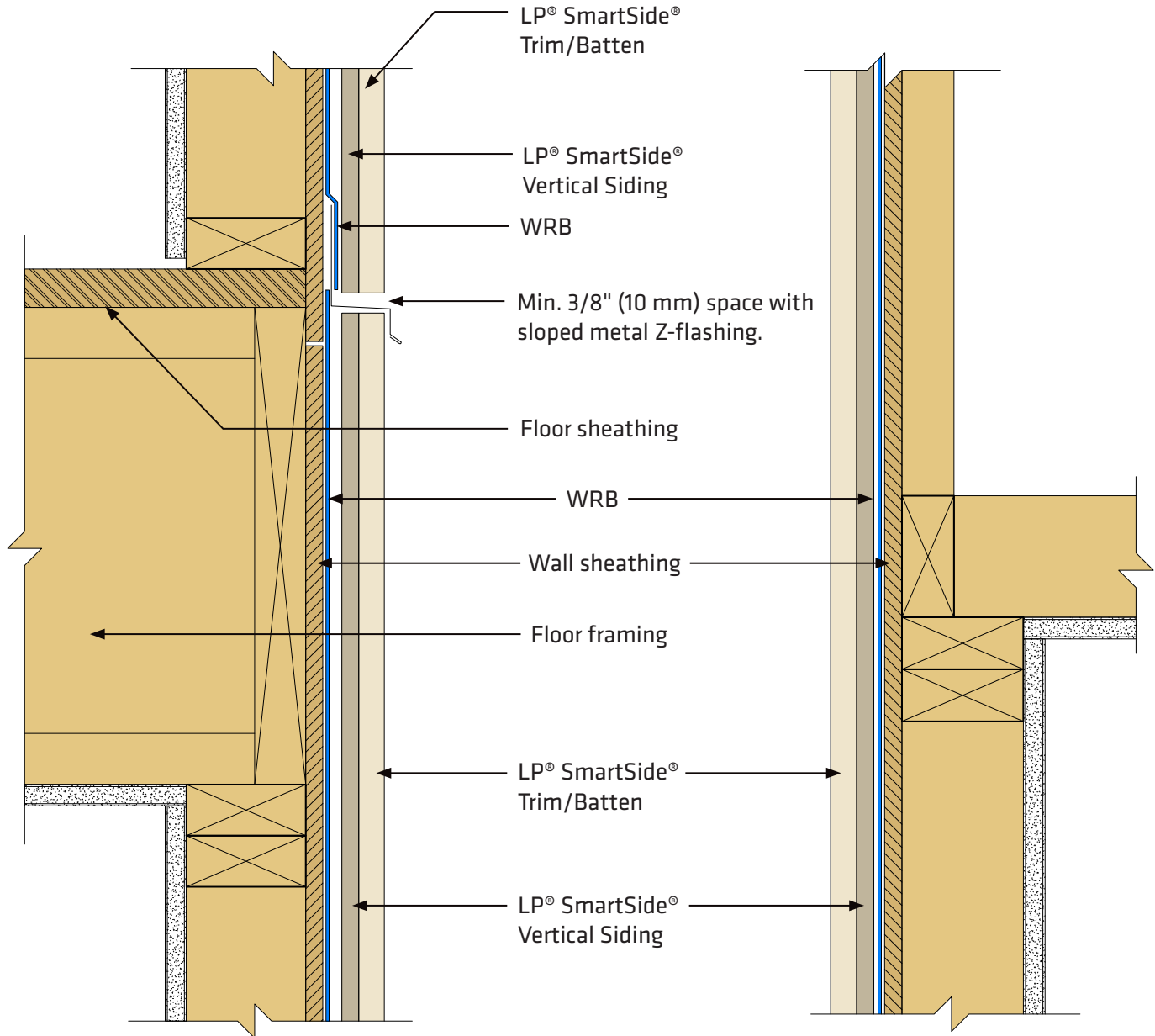
**Alternate Batten Attachment less than 2.5" (64 mm) wide**



**Figure 4b**

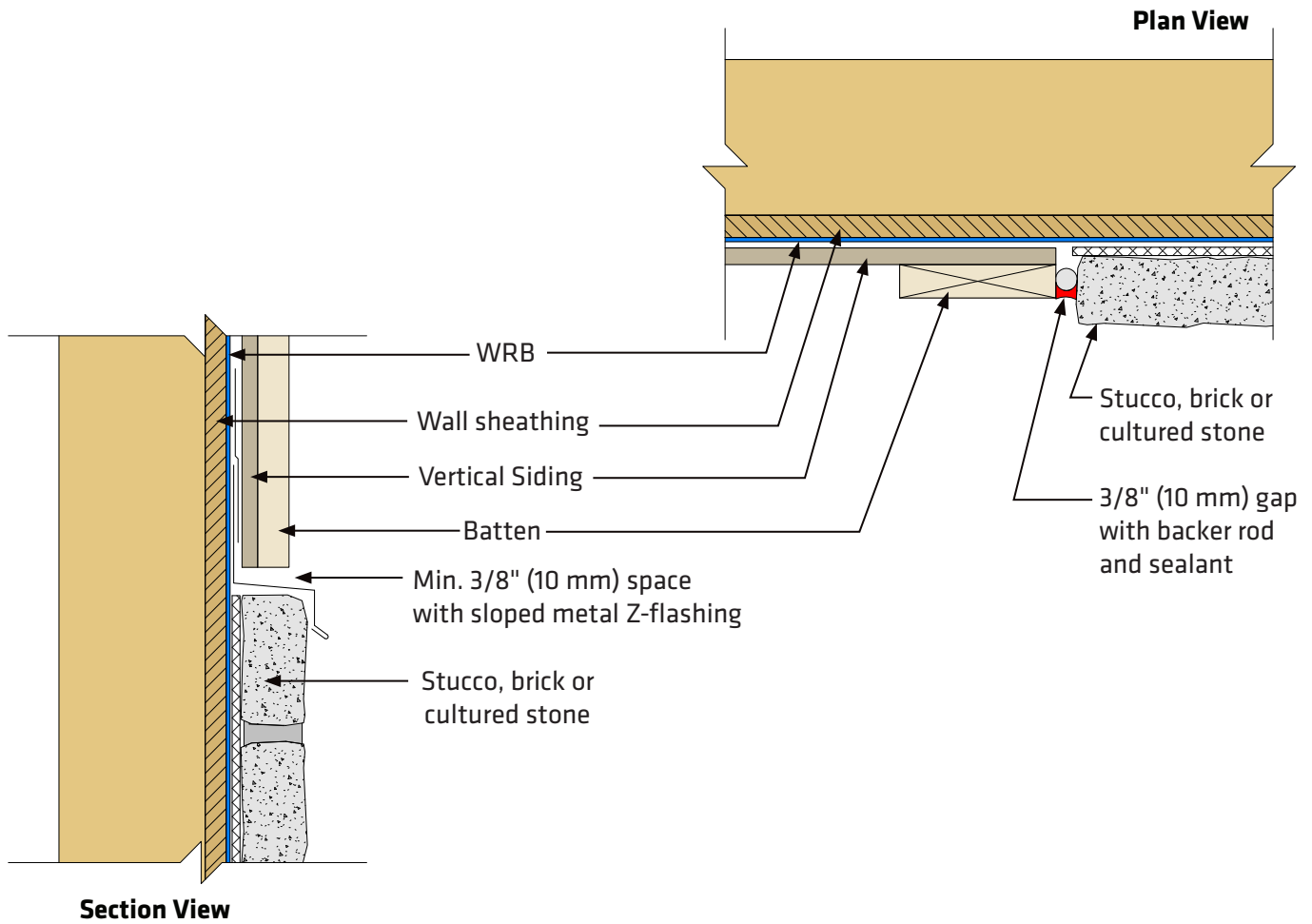
**Two Story  
One Floor to Ceiling  
Horizontal Joint Between Floors**

**One Story  
One Plate-to-Plate**



**Figure 5a**

**Figure 5b**



**Figure 6**