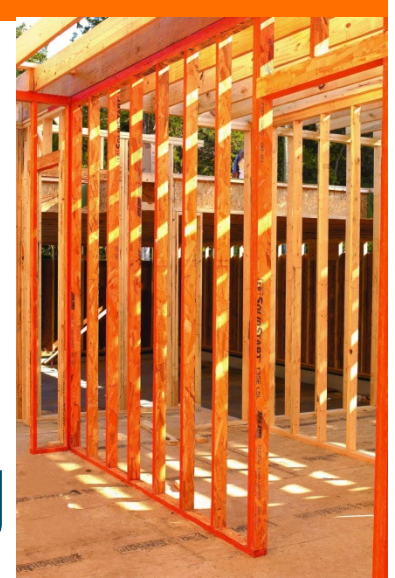




# SOLIDSTART®

ENGINEERED WOOD LSL



## Targeted Wall Framing

- Straight and true, helping cabinets stay level, countertops stay flush and tile walls remain in tact
- Excellent fastener holding capacity to support heavy cabinetry
- Matches traditional lumber sizes for easy integration into targeted wall framing applications
- Common PET (Precision End Trimmed) lengths available

- Recommended Grade: 1.35E
- Recommended Widths: 3-1/2" , 5-1/2"
- Recommended Thickness: 1-1/2"
- Recommended Lengths: 8' , 9' , 10'
- PET Lengths:           92-1/4" , 104-1/4" , 116-1/4"  
                                  92-5/8" , 104-5/8" , 116-5/8"

